

Mid-Bucks (Aylesbury) u3a

www.u3a.co

Information Sheet - April 2024

Editor: Solo Awadzi email: solokawadzi@hotmail.com



Meet at Community Centre

Prebendal Avenue

1.30 p.m. for Notices at 2.00 p.m.

Refreshments available

Cost will be 20p per person.

Speaker booked for 2.45 p.m.

Date	Speaker	Title
18th April	John Wilford	Soundman Wil - <i>A talk about his life working with some well-known artistes in the rock and pop music business.</i>

Colin White - Chair

Background history

I was born in 1964 in Leigh, Lancashire. My family moved to Gloucestershire in 1969, and then to High Wycombe in 1978. I attended the Royal Grammar School in High Wycombe, completed 'A' levels in 1983 and then attended Manchester Polytechnic until 1986. I attained a degree in Geography and Environmental Studies before trying to gain employment. Failing to achieve this on a permanent basis I then went to Silsoe College, part

of Cranfield University, where I completed a Post Graduate Diploma in Land and Water Management in 1988.

I started a 32-year career in the planning profession towards the end of 1988. I had jobs in Suffolk, Lancashire and Wiltshire, before landing my dream job of working in a nationally protected landscape (the Chilterns Area of Outstanding Natural Beauty) in mid-2001. I moved to Aylesbury at that time and have lived here ever since. I left the Chilterns in 2015 and spent the next five years working as a Lecturer in the School of the Built Environment at Oxford Brookes University.

Having had enough of red tape and marking I retired at the end of 2020. I initially had thoughts of setting up a micro-brewery to put my 40 years of home-brewing practice into action, but decided against that as it would be a more than full-time occupation. I spend too much time at my allotment and wanted to broaden my mental and physical horizons, so joined the U3A, the Ramblers and a local male voice choir.

Although I have only been a member of the U3A for a short while, I have thoroughly enjoyed the engagement that I have had with the branch that is local to me. I want to see it continue and to thrive, so I have offered my services to the Committee and hope to be able to take the branch forward as its Chairman over the next few years.

NOTICE OF AGM. Also attached to this Newsletter is the Notice and Agenda for the 27th AGM, to be held on Thursday 16th May, 2024 at Southcourt Community Centre at 2.00pm. The slip at the bottom of this Notice asks for nominations to join the Committee. Please feel free to use this form as extra help on the Committee would be gratefully appreciated.

Some suggestions from the Chairman

- a mention of the need for nominations for/elections to all roles on the Committee if Members felt that they were aware of people willing to do this, as some current Committee members are likely to step down in the near future.
- a plea for ideas about how the branch may generate new members.
- a reminder that the Committee would welcome suggestions for Groups that don't exist, or have fallen by the wayside, with volunteers to run them, and
- a reminder that the Committee would welcome general suggestions about the branch, and that the suggestions box would be available at monthly meetings on the sign in table.

MEMBERSHIP RENEWAL. The subscriptions for the year 1st April 2024 to 31st March 2025, are now due. A Membership Renewal Form has been sent out with this Newsletter and the subscription is £15.00 per person, as last year. There will be a box on the signing -in table at the April and May meetings, so that you can save on postage. There will

also be some printed forms for those who cannot download one from their computer. Please note that we need a form to be filled in even if you are making a BACS payment.

JIGSAW PUZZLE TABLE - Wendy Russell



Many thanks to those of you who have contributed puzzles to the Jigsaw Table. As hopefully the better weather is approaching, we have probably now got as many puzzles in circulation as we can cope with until the Autumn. There is also a Jigsaw Mat available for anyone who would like to take it home.

PUB WALKS - Jan Paver (07768 205950)

The pub walking group generally meets on the first Thursday of the month during the summer. We start at 11.00 at a local pub, walk about 3-4 miles, and finish off with lunch around 1.00 (optional). Apologies that I have been a bit slow to get going this year as it has been so wet! However, there is a walk planned for Thursday 2nd May, starting at the Lion on Waddesdon High Street (HP18 0LB). If you are interested in joining us, there will be a sign-up sheet at the April meeting or you can phone me for more details. All welcome.

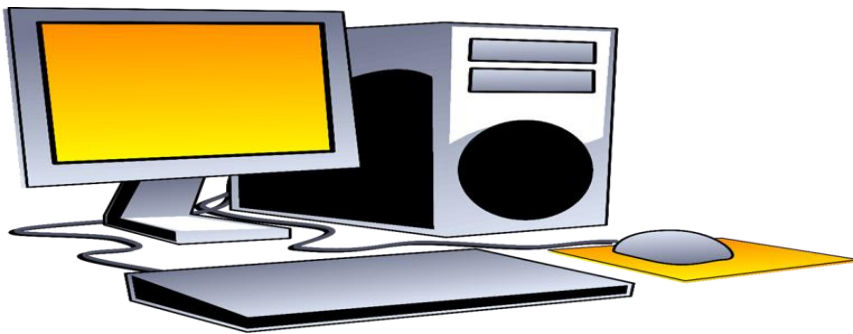
QUIZ GROUP - Ann Burman



The next Quiz is on **TUESDAY 16th APRIL** at Foxhills Indoor Bowls Club, starting at 2.00 pm. All members are welcome, and this month it will be **FREE!**

Quiz is always on the third Tuesday in the month.

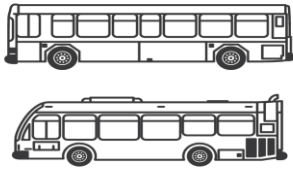
GADGET GROUP - Simon Reeks



Many thanks for the messages of support, much appreciated.

I won't be making house visits for a time but will try to help if you contact me by phone or email on 01296 482735 or reeks@fangio.co.uk

HISTORY OF TRANSPORT - Jim Wilding (01396 623628)



Our next meeting will be at 9, Mill Mead, Wendover at 2.30 on Wednesday, 17th April.

MUSICAL APPRECIATION –Jim Wilding (01296 623628)



Our next meeting will be on Tuesday, 23rd April 2024, 2.30, at 9 Mill Mead, Wendover.

TRIPS TEAM- Michael Walden, Ann Burman, Sally Smith and Chris Blaik



TRIPS INFORMATION

Reminder - SHUTTLEWORTH TRIP 24TH APRIL

Pick up times.

Exchange street 09.00am, Tennis club 09.05am and Bedgrove 09.15am.

37 members have booked and paid for this trip, thank you. Hopefully we will have a fine day to enjoy our first outing this year.

Leader Chris Blaik 01296425965.

STOW-ON-THE-WOLD & CHEDWORTH ROMAN VILLA

WEDNESDAY 22ND MAY 2024

Lead – Ann Burman – 01296 422084

Now is the time for those who put their name down for this trip to pay their £10.

Thank you.

FUTURE DATES FOR YOUR DIARY

26th June

Hever Castle Kent

Prices etc and confirmation booking forms will be available nearer to the dates.

Holiday in Barbados

We flew into Bridgetown, Barbados by British Airways, and got a taxi to our hotel called SEA BREEZE, which is in Christ Church area of the Island. Barbados is a small island in the Atlantic Ocean, north of Guyana. It's four hours behind GMT. Tourism is the main industry.



During the check-in at the hotel reception, we were welcomed with glasses of Champagne. In our room the mini fridge was filled with bottles of water, milk

and a bottle of wine. There was a kettle and a tray of tea, coffee and sugar which is topped up every day.



We had a sea view room; therefore, there were spectacular sunrise and sunset views with clean and golden sand beach from the balcony.

Newcomers were briefed every morning a day after their arrival at the hotel by incredible friendly and helpful staff. They enlightened the arrivals not only about the in-house activities but also those outside the hotel, these included historical places of interest, transport system, shops, local markets, night clubs etc. There are in-house activities throughout, seven days a week but one could organise own activities away from site.

We met lots of British nationals from Barnsley, Lancaster, Nottingham, Portsmouth, Southend, Dartford, Croydon, Henley-on-Thames, Cornwall, Ireland and a couple from Montreal, Canada who were there for their 12th time, because they like the hotel so much. Some were on cruise ships from New York and Canada who had 4 to 5 days break in Barbados. The highlight of our holiday was, a couple came from Sweden to get married on the sandy beach which was visible from our balcony. We felt as if we were part of it. We had dinner in the same restaurant with the newly wed.

We visited Usain Bolt athletic sport stadium, which is part of the University, plus a tour of the whole island in a taxi. The taxis are in form of 12-to-15-seater minibuses. The island has no football stadium, only parks, cricket pitches and a racecourse.



A particular place of interest to us was Hunte's Garden. This was established from sugar plantation by an Englishman from Christ Church, Dorset, England whose grandparents settled there, and he was born in Barbados.

The garden is opened to the public with an entrance fee. Mr Hunte has a list of names of all the plants/flowers in the garden. He also takes a great delight in telling his visitors about the plants in the garden. My wife was very impressed with the flowers and plants as she does flower arrangements for the Aylesbury Methodist Church. The hotel staff noticed my wife's love of flowers, so they



made a special flower arrangement for our room – which none of the rooms in the hotel had.



There are three swimming pools and three restaurants. Swimming in the sea was allowed as safeguards were always present. There was warning sign of high tides as precaution for swimmers.

Each day after breakfast we are allowed to book dinner at a restaurant of our choice. No T-shirts, swim-wears and sandals/open shoes are allowed in the restaurants in the evenings.

There were food and drinks in abundance throughout the day. You could have lunch at any restaurant you fancy. In fact, I have put on two kilos in weight, just in a week. Our glasses were regularly topped up with water or alcohol when empty. Variety of ice creams were flowing too on sunny days.



On Tuesday evenings, dinner is served at the beach with disco music, likewise Friday evenings with soft/light music.

There was never a dull moment at the hotel, but you could be lazy about, sitting by the pools all day if you wanted.

Every Monday evening before dinner, there is a cocktail party for those who may be leaving that week.

There is a gym, massage saloon, pool/snooker table, gift shop and rum bar. The staff emphasis was – “you are on holiday so enjoy yourself to the fullest”.

The secret of our visit is that – it’s a year of celebration for my upcoming 80th birthday in August, and our 50th wedding anniversary in December.

My advice is - take a spare toothbrush or battery-operated toothbrush as electric one was not chargeable because of different electrical connection. We had an international adaptor but still could not connect.

Our taxi fare to the Hotel on first day was inflated by the driver – instead of BD\$60 (USD 30) he demanded BD\$80 (USD 40).

We can highly recommend Barbados for “chilling out” holiday.

On the whole, we had a marvellous time in Barbados – we shall definitely go again!!!

Solo Awadzi

LOCAL HISTORY GROUP Jasmine & Simon Reeks

March meeting – It was rained off! We think we might try to add it to our programme later in this year and have two sessions in one month. What do you think? I will refund all moneys as I do not want to hold the cash.

April meeting – Thursday 25th April 10.00 – 13.00 Tiggiwinkles. Cost £5.00 per person. Talk, video and possibly meet an animal. After the Education Room based sessions, free flow around the public areas of the Hospital and grounds.

You can buy or bring your own coffee for the break, we will provide biscuits. For lunch if you are staying longer, bring your own picnic, buy a sandwich in the shop or even visit farm shop/garden centres nearby. Wear appropriate clothing, as most of the site is in the open air. ANYONE, ONE MORE PLACE AVAILABLE.

May meeting – Thursday 23rd May, 10.00 Coffee and walk starts 10.30 Kingsbrook Bierton Walk, led by Roger King. Cost £2.00 donation for The Aylesbury Society. A 3½ mile circular walk from The Dog House Pub Broughton Lane, Broughton, Aylesbury HP22 5AR. The K9 café is under new management so we will let you know if timings change for the start.

June Meeting - Thursday 27th June 14.00 (13.45) Collings Hangar Farm (Wren Farm) Trailer tour plus brief history of the farm, and drinks and cake after in the barn. Items for sale – honey, cookbooks etc. **We will need your special dietary requirement via email so we have a formal written confirmation.** We will meet in the car park 10-15 minutes before the tour. £12 per person. Directions A4128 just south of Prestwood HP16 0HP. The farm is called Collings Hangar Farm but is also known as Wren Davis & is situated on the A4128 just south of Prestwood, postcode HP16 0HP. For any of you who do not know where Prestwood is you need to take the A413 out of Aylesbury in the direction of Wendover and then towards Great Missenden. Take the turning into Great Missenden and then turn right at the mini roundabout which will be signed to Prestwood. You follow the road through Prestwood going around a 90-degree bend to the left. The farm is then half a mile or so on the right hand side. You will see a large Wren Davis sign on the right hand side and the farmyard car park is the next turning. (It is in that block of buildings!)

We need **30 attendees** so Local History Group please add your name to the list at the April Meeting – or email us if you won't be there (reeks@fangio.co.uk) because we will open the offer to non LHG during the coffee break.

Contribution Date - Friday 10th May 2024