

Mid-Bucks (Aylesbury) u3a

www.u3a.co

Information Sheet **March 2024**

Editor: Solo Awadzi email: solokawadzi@hotmail.com



Meet at Community Centre

Prebendal Avenue

1.30 p.m. for Notices at 2.00 p.m.

Refreshments available

Cost will be 20p per person.

Speaker booked for 2.45 p.m.

Date	Speaker	Title
21st March	Jeremy Holmes	Mad Bad and Dangerous to Know

WONDERFUL NEWS!

COLIN WHITE has been co-opted onto the Committee and is willing to “put his hat in the ring” for the position of Chair at the AGM in May. Much appreciated Colin.

There are still other vacancies to be filled; the most important of which is the position of Secretary caused by the death of Dave Rogers (see Obituary later). The Secretary’s main duties are to be the contact of The Third Age Trust and the Charity Commissioners and to issue Agendas and take Minutes at the AGM and the monthly Committee Meetings (currently on Zoom lasting about 40 minutes). PLEASE, PLEASE, will

someone step forward to take on this vital role so that our u3a can continue!

Geoff Short

Geoff's wife Paula has provided an update on Geoff's recovery and is keen for people to visit him if they would like as he is now on the slow road to recovery and would look forward to visitors and the stimulation of different faces to chat to.

He is on Ward 9 at Wycombe Hospital if anyone would like to visit him.

The ideal time would be 11.30am on a Tuesday or Thursday.

Best to check with his wife Paula first (tel: 01296 290645) as he will be moving to Amersham Hospital for rehabilitation at some point in the future when a place becomes available.

If you can't manage to visit in person, perhaps a message by email would be a good alternative.

JIGSAW PUZZLE TABLE - Wendy Russell



I hope those of you who took home a Jigsaw last month have spent a few happy hours assembling them. There is room on the table for one or two more puzzles if you could bring one along, although the storage facilities are limited!

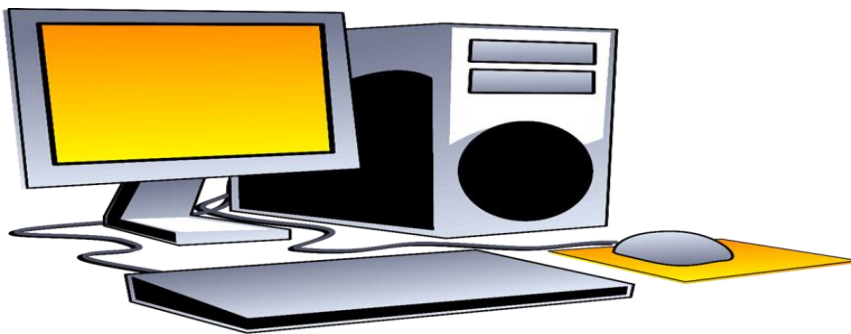
QUIZ GROUP - Ann Burman



The next Quiz is on **TUESDAY 19th MARCH** at Foxhills Indoor Bowls Club, starting at 2.00 pm. All members are welcome, and this month it will be **FREE!**

Quiz is always on the third Tuesday in the month.

GADGET GROUP - Simon Reeks

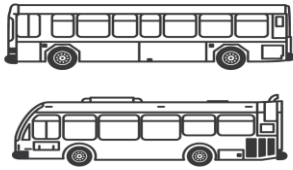


Several issues helped with this month including renewal of McAfee Antivirus subscriptions, installing Microsoft Office, bringing a laptop back to life and installing a printer.

I am now out of circulation for a few weeks and won't be able to help with any issues until towards the end of April - I'll put a "back to normal" date in the next (April) newsletter.

Please contact me and I'll see what I can do, by phone or email on 01296 482735 or reeks@fangio.co.uk

HISTORY OF TRANSPORT - Jim Wilding (01396 623628)



Our next meeting will be at 9, Mill Mead, Wendover at 2.30 on Wednesday, 20th March.

MUSICAL APPRECIATION –Jim Wilding (01296 623628)



Our next meeting will be on Tuesday, 26th March, 2.30, at 9 Mill Mead, Wendover

LOCAL HISTORY GROUP - Jasmine & Simon Reeks

March meeting – Thursday 28th March, 11.00 – 13.00
Quainton Walk Part 2 The Western End. (Not necessary for you to have walked Part 1!) Martin Jacobs, Chair of the Quainton Village Society will be our guide. Donation cost £3.00, per person. Please wear appropriate clothing, who knows what the weather will throw at us! Meet by the entrance lane to the Windmill at the top of The Green. For those who wish, we will be at The George & Dragon Café, 32 The Green HP22 4AR halfway down The Green for coffee from 10.30. Lunch can be taken afterwards either at the café – sandwiches, paninis or a sticky bun. Or there is the George and Dragon pub for a more substantial meal. Please make your own

arrangements for a meal - for further information see georgeanddragonquainton.co.uk.

April meeting – Thursday 25th April 10.00 – 13.00 Tiggiwinkles. Cost £5.00 per person. Talk, video and possibly meet an animal. After the Education Room based sessions, free flow around the public areas of the Hospital and grounds.

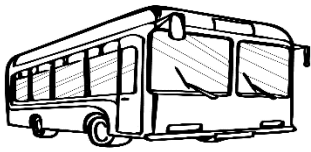
You can buy or bring your own coffee for the break, we will provide biscuits. For lunch if you are staying longer, bring your own picnic, buy a sandwich in the shop or even visit farm shop/garden centres nearby. Wear appropriate clothing, as most of the site is in the open air. ANYONE, ONE MORE PLACE AVAILABLE.

May meeting – Thursday 23rd May, morning, further details to be confirmed. Circular walk from The Dog House to Bierton. Guided by Roger King

GOOD NEWS - WILLIAM HARDING GRANT

We have, once again, been given a grant of £2000 towards coach costs for this year. This is being allocated as £400 for each of our 5 proposed trips thus reducing our charges. The costs quoted reflect this subsidy.

TRIPS TEAM- Michael Walden, Ann Burman, Sally Smith and Chris Blaik



TRIPS INFORMATION

FIRST TRIP OF THE YEAR 24th APRIL.

SHUTTLEWORTH MUSEUM AND SWISS GARDENS £25 p.p.

Pick-up points,

Exchange street 9.00am Tennis Club 9.10am Bedgrove 9.15am. (Motts Coaches.)

The full booking sheet will be available at the February and March meetings.

Please use the form to confirm your details e.g. tel.no. and pick-up point (there are places available if you haven't already shown interest.)

Payment is due at the March meeting,

The price includes 'meet and greet' and a cup of tea/coffee.

There is a cafe for meals and light refreshments during your day or bring a picnic.

Shuttleworth has an extensive website for full details.

Contact Chris Blaik (01296425964)

STOW-IN-THE-WOLD / CHEDWORTH ROMAN VILLA (NT)

WEDNESDAY 22ND MAY 2024

Lead – Ann Burman 01296 422084

Our second trip this year is to Stow-in-the-Wold and Chedworth Roman Villa (including a Guided Tour). The Sign-up List will be available at the meeting. We will start the day in Stow where time will be available for browsing the many shops and to enjoy a leisurely lunch. We will leave Stow at around 1.45 pm in order to arrive at Chedworth for a 2.30 pm admission. Unfortunately, coaches are not permitted to arrive at Chedworth before 2.30 pm

Because the majority of our members are also members of the National Trust, we have decided to charge for the coach only and this will be £10 per person. Non-National Trust members will be able to pay the £13/£14.30 (Gift Aid) admission fee on the day.

We aim to leave Chedworth at 4.30 pm in order to arrive back in Aylesbury by 6.00 pm.

FUTURE DATES FOR YOUR DIARY

26th June

Hever Castle Kent

Prices etc and confirmation booking forms will be available nearer to the dates.

OBITUARY for Dave Rogers (30/6/1940 – 20/1/2024)

Dave joined our u3a in about 2002 and was a very active member enjoying the outings and many of the Groups. He had served a 3-year term as Chairman and recently stepped up to be Secretary to fill the vacancy, although his health was failing. For many years he was the Editor of our monthly Newsletter, contributing interesting articles for us to enjoy. Dave was disappointed once he became unable to attend the meetings and go on outings, but he still hosted the Bridge Group in mid-December and was able to play a good hand of cards. One of his interests was Model Railways, and his track filled his whole back garden. He was also still involved with the Aylesbury Methodist Church administration and his Thanksgiving Service in February was well attended by u3a members, Churchgoers and family. He had meticulously planned the Service to be a “fun” occasion.
RIP

Contribution Date - Friday 13th April 2024